



This is a copy of a portrait of Button Gwinnett, one of the three Georgia signers of the Declaration of Independence and for whom Gwinnett County was named.



P. O. Box 261

Lawrenceville, Georgia 30246

Published by and for members of Gwinnett Historical Society in March, June, Sept. and December.
Dues \$7.50 Meetings: 3d Mons., 221 N. Clayton St.



Gwinnett County was born in this picturesque old house. It was the home of Elisha Winn. The first elections and sessions of Inferior Court were held in Mr. Winn's house in 1818. The historic home is located on Hurricane Shoals Road, one mile east of the Appalachee river.

Editor- Roy E. Hutchens Typists- Helen Hutchens and Mildred Breedlove
1980 - 1 March Issue

ELISHA WINN HOUSE NOW HISTORIC SITE

The Elisha Winn house, where Gwinnett County was created December 15, 1818, has been entered on the National Register of Historic Sites.

Notification came to John Chatham, President of the Gwinnett Historical Society, from the Department of National Resources, in a letter dated January 28, 1980.

A copy went to the Chairman of the Gwinnett County Board of Commissioners, since Gwinnett County owns the Elisha Winn house and leases it to the Historical Society.

Mr. Chatham says that Alice Hinton Ray is applying for a federal grant of restoration funds. The deadline is May 1, 1980.

Meanwhile, the Historical Society has launched a major fund-raising campaign to match the federal grant.

"A new roof and repairs on the chimneys are needed immediately as a first step in restoration of the Elisha Winn house," Mr. Chatham says. "The caretakers of the house also need running water to their living quarters."

MEETING FEB. 18 KICKS OFF CAMPAIGN

GHS meeting Feb. 18 at 7:30 p.m. at GHS headquarters, 221 N. Clayton features promotional campaign designed for us by students of Georgia State University. This will kick off a two-month push for new members and for support of the Elisha Winn Restoration project.

CHATHAM BEGINS THIRD TERM

John Chatham was installed for a third term as President of the Gwinnett Historical Society at the Society's December meeting at the First Methodist Church of Lawrenceville.

He is chairman of the Society's committee to restore the 168-year-old Elisha Winn house near Dacula, where Gwinnett County was organized in 1818.

Others installed in the induction ceremony, conducted by past-president Annette Tucker, were:

Dorsey Stancil, Vice-President
Janis Sawyer, Recording Secretary
Joyce Pickens, Corresponding Secretary
Charles L. Pentecost, Treasurer
Jane Edwards, Assist. Treasurer
Alice Hinton Ray, Historian

Book Editor:

When Alice McCabe moved to Gwinnett County seven years ago, probably nobody could have predicted what an authority she would become on the history of this 161-year-old county.

Three months after Mrs. McCabe and her husband, John, moved here they took a tour of historical sites in the county.

During the tour, Gwinnett County Historical Society president John Hood noticed Mrs. McCabe taking notes. He asked her to describe the tour in an article for possible use in the local newspaper. He liked her job of history

While Gwinnett races ahead to become the first or second fastest growing county in the United States, Alice McCabe "would like to warn the county's construction and industry people that we should not forget where we came...."

writing and asked if she would volunteer her services as secretary to the society.

"It was really great," said the petite, perky Mrs. McCabe. "I've never had such a good introduction to a new area. Not only did I learn the

obvious historical things, like the signs on the courthouse yard, but I met the old-timers. I met people I never would have met otherwise."

Currently, Mrs. McCabe is working frantically (she has

a March deadline) to compile a book entitled "Gwinnett County, Georgia Families, 1818-1968."

The book is the complete histories of 310 Gwinnett families and Mrs. McCabe contracted with the Gwinnett Historical Society to edit the book.

The book has been advertised nationally and statewide and more than 500 copies of the local history have been sold at a pre-publication price of \$20.

"Editing the book has been so exciting," said Mrs. McCabe. "In the process of researching the book, many of our members (about 500) have re-met people who they knew years ago. Some have even discovered cousins they never knew they had."

Mrs. McCabe believes projects such as these are important.



"While Gwinnett races ahead to become the first or second fastest growing county in the country, I — as one interested in history — would like to warn the county's construction and industry people that we should not forget where we came from and how our forebearers struggled to make Gwinnett the attractive, woodsy, hometown place it is today.

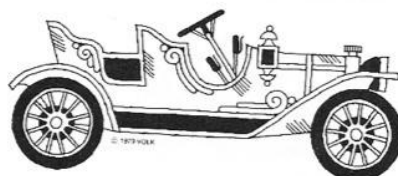
Mrs. McCabe feels that attention must be paid to things like old cemeteries, restoring the old look of downtown Lawrenceville, preserving the courthouse, providing a museum and a historical library which can be open to the public for research and providing a staff of historically-trained people to answer mail and phone calls from people looking for geneological information.

After Mrs. McCabe finishes editing her Gwinnett history book, she plans to return to her profession as a free-lance writer.

But, there is little doubt she will continue to press for some sort of county assistance in formulating what she sees as a fundamental service to the citizens of the county — a Gwinnett County Historical Society with a professional paid staff.



CHARLES PENTECOST LOOKS OVER GRAVESTONE OF WILLIAM MALTBIE
Maltbie Was One Of Original Planners Of City Of Lawrenceville



DISTRIBUTION OF FAMILY HISTORY BOOK SCHEDULED THIS FALL

Distribution of the Historical Society's new book "Gwinnett Families, 1818-1968" is tentatively set for sometime in November, Mrs. Edith Green, Book Chairman, says.

For several months the hardback book of about 750 pages has been assembled by Mrs. Alice McCabe, an experienced journalist. She has edited 315 Gwinnett family histories, and with the help of Joyce Rovetta, will select 100 pictures from 145 submitted.

The book goes to Cherokee Publishing Co. of Covington in March; then comes the tedious task of proof reading.

From the proof Mrs. McCabe and volunteer helpers will tackle the job of indexing approximately 30,000 names contained in the book. To help out families are asked to make a 3x5 card on each name in manuscripts they submitted. (Call the office 962-1450 if you plan to index yours; otherwise volunteers will do it).

John Hood, finance chairman, said 615 books had been sold through January at the pre-publication price of \$20.00. They now cost \$25.00 per copy, plus \$1.00 mailing.

"The response to pre-sales of the book has been fantastic," says Mrs. Green. "You wouldn't believe the interest it has created in genealogy and history of Gwinnett County, especially among descendants of pioneer families."

"Don't be impatient about getting your book. It takes time to prepare and publish a book of this magnitude," Mrs. Green added.

HISTORY FEATURED IN GWINNETT MAGAZINE

Compliments to Len Gilbert, Executive Vice-President of the Gwinnett County Chamber of Commerce and his staff for the colorful and informative winter issue of GWINNETT MAGAZINE.

Of interest to members of the Gwinnett Historical Society is a two-page section of beautiful color photos of historic homes, captioned "HISTORY LEAVES A COLORFUL TRIAL..."

In addition to Lawrenceville Female Seminary, the following homes are pictured: Robert Craig (known as "Little Egypt" in Civil War Days), James Craig, Elisha Winn (built in 1812), Wynne-Russell, Lilburn, and Andrew Jackson Webb (See p. 9 this Quarterly).

John Hood accompanied the photographer and picked the homes for the magazine. Charles Pentecost worked with the Chamber's staff in selecting and identifying the pictures.

These historic pictures are worth anyone's album. The magazine can be purchased from the Gwinnett County Chamber of Commerce for one dollar.

CEMETERIES RECORDED

The following cemeteries have been recorded. Many are not complete. Some list inscriptions that have not been transcribed, but interpreted. Final copies are not always organized. Not all cemeteries are in Gwinnett County.

CHURCH cemeteries are usually listed by the name found on the "final" copy.

CHRISTIAN churches recorded are: Hopewell, New Hope, Omer, and Trinity.

BAPTIST churches recorded are: Antioch, Bethany Missionary, Camp Creek Primitive, Chestnut Grove, Corinth Missionary, Collins Hill, Duluth, Friendship Primitive, Grace, Haynes Creek Primitive, Hog Mountain, Island Ford, Ivey Primitive, Lebanon, Liberty(Lilburn First), Liberty Hill, Luxomini, Mt. Moriah, Mt. Zion, Old Field, Rockbridge, Shiloh, Sweetwater Primitive, Yellow River Primitive and Zion Hill.

METHODIST churches recorded are: Bethesda, Duluth, Harmony Gove, Lebanon Creek (So. Cemetery), Martin's Chapel, Mt. Carmel, New Hope (Old New Hope Methodist Episcopal), Pleasant Grove, Prospect, Rockspring, Suwanee and Zoar.

PRESBYTERIAN churches recorded are: Bethel, Fairview and Goshen(Old Norcross Presbyterian).

OTHERS recorded are: Duncan's Creek Congregational, Ewings Chapel, Harmony (Old Flint Hill) and Sodom.

FAMILY cemeteries are listed by the traditional name, the most concise name, or by the name of the deceased buried there first.

Family cemeteries recorded are: J. Akers, Anderson-Maquire, Atkinson, Beard, Benson, Boring, Boyce, Born, Brand, Brandon, Braswell, Brooks, T. W. Brooks, Brownlee, Buchanan, Carroll, Craig, Dean, Dobbs, Douglass, Eckles, Garner, Gholston, Gober, Goodwin, Gower, Hale, Haney, Hannah, Hawthorn, Holcomb, Holt, Huff, Jacobs, Johnson, Jordan, Lanier, Lee, Lietch, Little, Loveless, McKinney, McKerley, McMillan, Mahaffey, A. W. Matthews, J. T. Matthews, Miller, Morrow, Nash, Nesbit, Peavy, Pounds, Prater, Quinn, Rawlins, Richardson, Richey, Scales, Steele, Still, Strickland, Taylor (Old Collins Hill Baptist), Teague, Towler, Wallis, Watts, Whaley, Wilkinson, Williams, Wynn and Young.

PUBLIC cemeteries recorded are: East Shadowlawn, Lawrenceville (Old Lawrenceville Methodist), Norcross, ~~Shadow~~ Brook, Shadowlawn and Snellville.

THANK YOU to all who have shared their transcriptions with the Society.

Jeanclaire P. Morris, 972-6839, or Box 836,
Lawrenceville, GA. 30246

GHS ACQUISITIONS

Mrs. Oliver Harris has presented GHS with the following interesting Baptist Minute Books:

The twenty-fourth Annual Session of the Second Georgia Baptist Association
Sept. 1901 and 1903

Lawrenceville Baptist Association for years 1904 - 1907; 1913; 1915; 1920; 1922;
1923

Pleasant Grove Baptist Association for years 1925-1948; 1952 and 1953

Miss Annie Maltbie of Buford donated photo copies of family pages in Bibles of
James Bryant Maltbie 1881 and John W. Maltbie 1873

FIRE DESTROYS 150-YEAR-OLD HOME OF WILLIAM MALTBIE

The 150-year-old home of William Maltbie, one of the founders of Lawrenceville, burned to the ground on December 13, 1979. It was the second fire in the historic house in two years.

The house, located at the intersection of Maltbie Street and Curtis Road, was built in the 1820's, soon after Maltbie moved from Hog Mountain where he operated a store and tavern. He came from Connecticut in 1814.

Maltbie brought to Lawrenceville his 13-year-old bride, daughter of Elisha Winn, in whose Hog Mountain home the county of Gwinnett was created. Lawrenceville was chartered December 15, 1821.

Maltbie was the town's first postmaster, and was clerk of the Gwinnett Inferior Court for years.

His wife, Philadelphia gained notoriety when she walked into a Lawrenceville whiskey store and smashed all the bottles from the shelves with a long cane. She claimed that her son's life was being ruined by the saloon.

The Maltbies are buried in the old Lawrenceville Cemetery on East Pike Street off U. S. 29.

Maltbie is the great, great grandfather of Charles L. Pentecost of Lawrenceville, former president of the Gwinnett Historical Society. Maltbie is also the great grandfather of Kenan Terrell of Lawrenceville, GHS member.



GWINNETT DAILY NEWS 12/13/80

LONG-TIME AREA RESIDENTS LOOK OVER RUINS OF HISTORIC MALTBIE HOUSE IN LAWRENCEVILLE
Mrs. Allie Barrett Townsend, 81, And Beulah Phillips Breedlove, 86, Inspect Rubble

TRACING TRACY

J. Tracy Power joined the Gwinnett Historical Society when he was 16 years old, then a 12th grader at Berkmar High School near Lilburn.

Always interested in the War Between the States, Tracy became curious if any of his ancestors served in the Confederate Army. He started a time-consuming research, lasting from August, 1974 until April, 1975. He came up with a list of men, mostly from Gwinnett County, who served in Gwinnett companies, batteries, or troops in the infantry, artillery, cavalry or militia.

The Gwinnett Historical Society financed the printing of 500 copies of Tracy's 48-page booklet listing alphabetically the name, rank and unit of all the soldiers in the 18 Gwinnett County outfits.

(A few copies remain unsold and can be purchased for \$2.50 each by writing the Gwinnett Historical Society, P. O. Box 261, Lawrenceville, GA. 30246)

Tracy, now 21, is a senior at Emory University, majoring in history. After Emory, he plans doing graduate work in history either at the University of North Carolina or the University of Virginia.

"I plan eventually," he says, "to either teach or write history, or both."

When he has time from his studies, Tracy lectures to groups, and does some writing. He wrote about Col. Edward Willis of the 12th Georgia Infantry for the April, 1979, issue of "Civil War Times Illustrated."

Tracy wrote a popular weekly column "Historically Speaking" for the Gwinnett Daily News for four years.

"THE MARCH TO THE SEA" - THROUGH GWINNETT

A new marker detailing Maj. Gen. W. T. Sherman's march to the sea at Savannah after destroying Atlanta, has been erected at the Yellow River bridge on Highway 124 between Lithonia and Centerville.

The marker, placed by the Georgia Historic Commission, tells how Sherman divided his army into wings, the South Wing going toward Macon, and the left wing (14th and 20th corps) following the Georgia railroad through Decatur, Stone Mountain, Social Circle and Madison.

The 14th corps, accompanied by Sherman, "cleared Decatur" on November 15, 1864.

"The next day," the plaque reads, "the 14th corps turned southeast toward Covington. The night the 20th corps camped near Stone Mountain where the next morning about two miles of the Georgia railroad track was destroyed.

"On the 16th, the 20th corps continued east on the Rockbridge road, crossed the Yellow River and camped here in the vicinity of the Rockbridge post office."

(At the marker location, flat rocks protrude above the Yellow River stream, enabling a crossing by foot - hence the name ROCK BRIDGE.)

OLD NEWSPAPER GEMS

WEDDINGS RATE FRONT PAGE ON JUNE 13, 1907 Gwinnett News-Herald

Medlock-Johnson

The social event of the week at Norcross was the wedding of Miss Cynthia Ethel Medlock to Mr. Thomas Edwin Johnson, which took place at the home of the bride's parents, Mr. and Mrs. M. C. Medlock, on Thursday evening, June 6th, at half past 8 o'clock.

The decoration plan was white and green bamboo, graceful ferns, white carnations and roses, being used to beautiful effect.

There were no attendants save the two tiny ribbon bearers, Miss Elvina Davenport, a niece of the bride, and Viola Johnson, the groom's small sister, who preceded the bride and groom, bearing the long white ribbons which formed an aisle leading to the improvised altar of palms and smilax. Here Rev. C. P. Marchman, of the Norcross Methodist church, performed the ceremony.

The wedding marches from Lohengrin and Mendelssohn were beautifully rendered by Miss Louette Johnson.

The bride was gowned in a becoming going-away costume of tan cloth, with hat to match. She carried an armful of bride roses.

After the ceremony an informal reception was held and a delicious buffet supper served.

Mrs. Johnson is a charming young woman of attractive personality. She has many friends and admirers, to whom her wedding was an occasion of the deepest interest.

The groom, a prominent young merchant of Norcross, is a young man of noble character and splendid equipment, who is winning success in the business world.

Brown-Moore.

A wedding not only of surprise, but one of wide spread interest, was that of Miss Maxie Brown, of near Buford, and Mr. John E. Moore, of Fort Russell, Wyoming, last Sunday morning at Rev. Wiley Owen's, who officiated. After the ceremony the wedding party was delightfully entertained at the home of Mr. and Mrs. Charles D. Morton, where an elegant dinner was served. Mrs. Morton, the hostess, entertained in a gracious manner. Her genial disposition, together with her and her husband's true hospitality, have won for them a large circle of friends.

The bride never looked lovelier than in her wedding suit of pure white lingerie and her fairness of face and dress only reflected her fairness at heart, as she is endowed with that sweet, sunny disposition which makes for her a sunbeam in the hearts of all she meets. The groom is a young man of sterling qualities, having spent several years of his past life in the west, where he has had all advantages of experimenting himself mentally and financially for the matrimonial road. A FRIEND.



Mr. and Mrs. Johnson left on the 9:40 train for a trip north and east. They will return by water coming by Savannah.

1896 POETRY TO TUNE Of "Dixie"

Gwinnett Herald

2/18/1896.

A NEW DIXIE.

Frank L. Stanton, the Constitution poet, issues a new edition of Dixie. It can be sung in Georgia, for it fits:

PLANT AWAY.

Last year's mortgage done forgotten
Dixie farmer plants more cotton,
Plant away,
Plant away,
Plant away down south in Dixie!

From brisk Atlanta way past Macon
Cry goes up for western bacon,
Plant away,
Plant away,
Plant away down south in Dixie!

The corn's killed out—the 'aters
rotten,
Mule moves on to the tune 'o cotton
Plant away,
Plant away,
Plant away down south in Dixie!

Don't talk 'bout hogs, an' hay, an'
clover—
Put me in cotton an' roll me over!
Plant away,
Plant away,
Plant away down south in Dixie!

MONROE COUNTY HISTORICAL SOCIETY is publishing a book, 750 pages of history, maps and photos. Pre-publication price \$20. To order send ck. for \$22.50 (inc. tax and handling) to: Monroe Co. Historical Soc. PO Box 716, Forsyth, GA 31029

OLD MILTON COUNTY ORGANIZES SOCIETY

Old Milton County Historical and Genealogical Society has been formed to preserve the history of that section, northwest of Gwinnett, that is now Fulton Co. The group meets on the same night as our GHS, that is, the third Mondays at 7:30 p.m., at the Wills Park Recreation Building, Alpharetta.

Mrs. Leona Collins of 367 Karen Dr., Alpharetta 30201 (Phone: 475-4247) hopes they will soon be chartered. They have started abstracting the first book of marriages in 1857 after Milton was formed from Cherokee, Cobb and Forsyth counties; also, they are putting alphabetical order all 236 families that were in the 1860 Census.

Dues are \$10 for charter members and \$5 thereafter.

WYNNE-RUSSELL HOUSE

By Janis Sawyer

Efforts to preserve the Wynne-Russell house in Lilburn received a boost in December when the Lilburn Woman's Club sponsored a tour of homes and preview party for the Restoration Fund.

This house was entered on the National Register of Historic Sites in 1977 and purchased by the small city of Lilburn for community use.

Preservation costs could not be funded from the town budget, but about \$25,000 has been raised and donated over a two-year period.

Thomas and Mary (Prince Benson) Wynne came to Gwinnett County in 1826. Thomas had served in the War of 1812; his father, Mary's father and grandfather had all served with the Colonists in the Revolution. One daughter married the son of Gwinnett County's first sheriff, William Nesbitt, while another daughter married James W. Smith.

Three generations later, Tullie Smith was born, making the Wynnes great grandparents of Miss Tullie, whose family home was restored by the Atlanta Historical Society. One son was killed serving the Confederacy. Another son, Robert, married Martha Anne Russell, daughter of James Russell, who designed and built the Fairview Presbyterian Church in Lawrenceville.

Robert and Martha Anne lived with Mary, after Thomas died in 1839. Mary died in 1867, leaving the homeplace to Robert, who sold the Wynne house to Nathan Russell (his brother-in-law) in 1878. Since then, the property has been known as the "Russell Place."

The goal of preserving an early home in this section of Gwinnett County is within closer reach, and there is deep gratitude to all who have helped.

GWINNETT HISTORY SPEAKERS AVAILABLE

If you need a program speaker to relate some phase of Gwinnett County history please call the office of the Gwinnett Historical Society, 962-1450 or 963-6462.

Some of the Society's speakers include:

Jay Heard Summerour, retired Duluth postmaster - interesting lecture with slides and artifacts on Cherokee Indians.

John Hood - familiar with historic sites and events in all sections of the county. He spoke at the Dacula Elementary School in February on the history of the Dacula area.

Mildred Martin - on Lilburn history.

John Chatham - plans for restoration of Elisha Winn house.

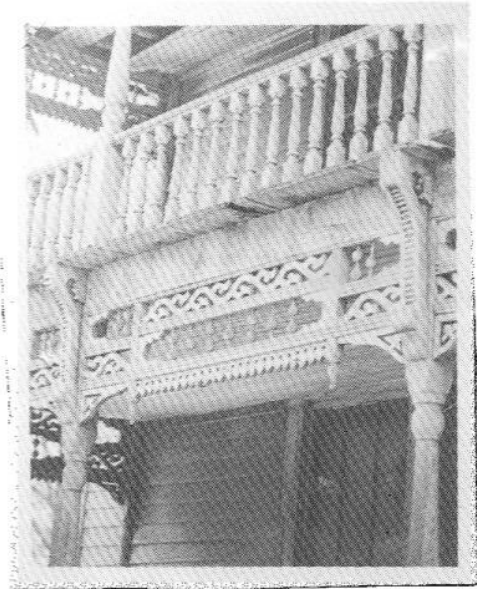
County Historian Marvin Worth - his time permitting, an excellent speaker and authority on the history of Gwinnett County.

Charles L. Pentecost - history of the 168-year-old Elisha Winn house near Hog Mountain.

ANDREW JACKSON WEBB HOME

This is the home of the late Andrew Jackson Webb, a well-known Baptist preacher, successful operator of a cotton gin, a corn grinding mill, a syrup mill, and a 900 acre, 12 mule, 5 tenant farm.

The house, standing near the intersection of Webb Gin House Road and Highway 124, is being restored by an Atlanta heart specialist and his wife. The house was built by the James Flowers family around 1855, and is known as an upland plantation style house - three fireplaces with outside field rock chimneys, five large rooms downstairs, two bedrooms upstairs, with a porch balcony.



Balcony Gingerbread



ANDREW JACKSON WEBB

The Rev. Andrew Jackson Webb, a short wiry man who wore his hat when not preaching or dining, was a person of many talents.

He was the grandson of Wiley W. Webb, one of the earliest settlers in Gwinnett County whose ante-bellum plantation home stood near big Haynes creek west of Rosebud.

He joined the Confederate Army when he was 16 years old, and suffered a shoulder wound in a battle at Chancellorville, VA. After the war, he and two companions walked back to Loganville, GA. It took them two months and they nearly starved.

Continued Next Page

(cont. from p. 9)

Back home Mr. Webb married Jane Braswell, acquired a house and about 900 acres of land running roughly from Pugh Creek to the old Mt. Zion church, north and south.

Mr. Webb, having been baptized while serving in the Confederate Army, felt a call to preach and served two of the oldest Baptist churches in his community, Friendship and Mt. Zion, both constituted before the War Between the States.

He built a cotton gin and corn grinding mill, both operated by a steam engine, on the old Snellville-Lawrenceville Road near his home. He also had a store and a small post office. A carrier brought mail out from Lawrenceville twice a week, first on horseback, later by horse and buggy.

The community was named Webbville and was listed on state maps as one of Georgia's towns until 1925.

The old cotton gin house and the Webb family are perpetuated in memory by a well-known road - WEBB GIN HOUSE ROAD - which runs from Grayson Highway into Dogwood Road near the Friendship Baptist Church.

"Grandpa" Andrew Jackson Webb never lost his love for the Confederacy. He never missed a reunion of his Confederate buddies. In a 1909 issue of the "Confederate Veteran," he reported on a reunion at Athens, GA. He wrote numerous articles for the magazines, including one about an unexpected reunion with a soldier he had left for dead on the bloody battle field of Chancellorville, VA.

When Andrew J. Webb died in 1924, at the age of 80, James E. Webb took over about 400 acres of his father's farm and for several years continued operation of the corn grinding and syrup mills and the cotton gin, although cotton ginning had slowed to a dribble because of the boll weevil.

The Rev. Andrew Jackson Webb and his wife and his son, James E. Webb and his wife, the former Daisy Nash, are buried in the old Friendship Baptist cemetery on Dogwood Road.

The children and grandchildren of Mr. and Mrs. James E. Webb live in this community, most of them on land of their grandfather and father. They are: Tom Bell, Andrew J. ("Bud") named after his grandfather, Jule, Lucile Webb Duffey and A. W. Two sons, Harold and Golden, are deceased.

HISTORICAL SOCIETY BOOMING

The Gwinnett Historical Society gained 185 new members in 1979. Many were attracted to membership in the Society because of its upcoming book "Gwinnett Families, 1818-1968."

Through February of 1980, a total of 41 new joined, including 18 Girl Scouts from the Lilburn area.

The Society now has more than 500 members, including 50 historical and genealogical societies and individuals throughout the United States.

Gwinnett Historical Society, Inc. was chartered January 2, 1968. Petitioners were Marvin N. Worthy, first President of the Society, Mrs. Annette Williams Tucker, Mrs. Katherine Cash Emerson, John J. Hood, Mrs. Sara Johnson, Mrs. Mildred Martin and George Jacobs.

CHILDREN RECORD OLD TOMBSTONES



SOCIETY HAS FUTURE WITH YOUNGSTERS LIKE YOU
Jeanclaire Morris Tells Stephen, Stacey Cahn

"It's through young people like you that the history of Gwinnett County will be preserved and perpetuated in the Gwinnett Historical Society," Mrs. Jeanclaire Morris tells Stacey Cahn, 9-year-old Lilburn Girl Scout, and her 12-year-old brother, Stephen.

Mrs. Morris is chairman of the Society's cemetery committee, which is researching and cataloging all available cemeteries in Gwinnett County.

The Cahn children "found a graveyard" near their home, recorded the names and dates they saw on the markers, and delivered their findings to Mrs. Morris. Stacey and Stephen's parents are Bob and Niki Cahn.

(Photograph and info from Pat Johnson-Gwinnett Daily News)

See page 4 for list of CEMETERIES already recorded by and for GHS.

MEMBERS SHARE VALUABLE PAPERS, BOOKS, etc.

Gwinnett Historical Society is richer for the recent donations of:

1. An original deed, dated 15 December 1838 between Bennett D. Cooper and Levi M. Cooper for 200 acres on the south side of lot 66 in Fifth Land District. Donated by Levi's great grandson, Frank L. Cooper, P.O. Box 105, Grayson, GA. 30221
2. Book, Our Mc Donalds and Allied Families 1771-1962, by the author, Myrle Cofield Messer of Athens, in memory of her mother, Susan McDonald Cofield and Susan's father, William Reno McDonald, who grew up in Gwinnett County.
3. Scroll-type photo of Bona Allen employees 1923. Donated by Randolph Moore, executor of the estate of the late Horace Higginbotham.
4. John and Nathan Hutchins of Lawrenceville have presented Vol. II History of Georgia, published 1926 by J. C. Clarke, Atlanta, part of a collection of their father's, the late Nathan L. Hutchins III.
5. Mrs. I. L. Barbee donated early 1900 postcards of Lawrenceville, photos of young ladies at Mineral Springs, Lawrenceville Cornet Band, Lawrenceville Electric Plant, 1890 Lawrenceville City Council, WW I veterans reunion.

1979 MEMBERSHIP INCREASED BY 185. THESE WERE THE LATEST:

Young, Roy B.
30 E. June Dr.
Sulphur OK 73086

Fowler, Mrs. Clement (Betty L.)
1459 Cornell Rd. NE
Atlanta, Ga. 30306

Mary Lou Loudon (Mrs. Gordon)
1408 Stephens Ave.
Baton Rouge, Louisiana 70808

Mrs. Katherine McCarley
1447 Sagamore Dr. NE.
Atlanta, Ga. 30345

Mrs. Vicki Bannister
5525 Bowers Rd.
Stone Mountain Ga. 30087

Jack L. Hamilton
2438 Thrasher Rd.
Buford, Ga. 30518

Richardson, Lewis W.
5443 Dogwood Lane
Gainesville, Ga. 30501

Mrs. Harold P. Jackson
P. O. Box 1132
McDonough, Ga. 30253

Mrs. Helen Mote Masters
2594 Masters Rs.
Dacula, Ga. 30211

Donald W. Cates
2463 Northland Ave.
Overland, Mo. 63114

John Hutchins
P. O. Box 85
Buford, Ga. 30518

Stephens Tilley McElroy
Wesley Woods Tower #101
1825 Clifton Rd.
Atlanta, Ga. 30329

Alice B. Kilgore
719 Lookout Dr.
Forest Park, Ga. 30050

Mrs. Annie P. Moore
Route 2
Loganville, Ga. 30249

Ms. Grace Minor Huff
2924 Winfield Cr.
Tucker, Ga. 30084

Mary Guinette Cofer Angle
32 Ash St.
Rome, Ga. 30161

Henry Francis Wages
265 Culver St.
Lawrenceville, Ga. 30245

Mrs. Thelma Crawford
625 Belt Line Blvd.
Columbia S.C. 29205

Mrs. William L. Wallace
717 Perry St.
Gainesville, Ga. 30501
(Reinstated)

(Correction : Last Quarterly (1979-4)

Lydia Ruth should have read: Lydia Ruth Alexander , 516 Poplar Av, St.Simons,GA 31522,

41 NEW MEMBERS SO FAR IN 1980:(See p 13 for student members)

Eddie Jewel Anderson
585 E. 57th Street
Jacksonville FL.32208

J. D. Ambrose
445 Brentwood
Atlanta, Ga. 30305

Rena Owens Clack
3265 Boulder Dr.
Stockbridge, Ga. 30281

Mr. and Mrs. C Blue Bagwell
P.O. Box 42
Lawrenceville, Ga. 30246

Barbara L. Potter
5160 Ash St.
Forest Park, Ga. 30050

Rita Frances Strom
5 Meadowsweet Way
Irvine, CA. 92615

James W. Loats
1064 Evelyn Lane
Lilburn, Ga. 30247

Celia Sorrells Williford
1813 Sylvan Rd. S.W., #A
Atlanta, Ga. 30310

Ann Kirkus
851 Stewart Ave. S. W.
Atlanta, Ga. 30310

Frances Griffin Langford
5555 Roswell Rd.
Atlanta, Ga. 30342

George G. Johnston
6109 Baylor Dr.
Bartlesville, OK. 74003

Miriam Smith Cruz
Rt. 1, Box 806
3750 W. Sahuarro Dr.,
Tucson, AZ.

William Marshall Jones
P.O. Box 172
Duluth, Georgia 30136

Martha B. Collins Edge
109 First Street
Gainesville, Ga. 30501

Pearl Sorrells Algood
1451 Oakland Dr. S.W.
Atlanta, Ga. 30310

Mrs. Frances Johnson
317 Craig Dr.
Lawrenceville, Ga. 30245

Susie Bennett Veal
4278 Sandy Hill Road
Buford Ga/ 30518

Delaney Debs Willett
1930 Lucky Street
Bakersfield CA. 93307

Laura Winn Rocheleau
Route 1, Box 139-B2
Elk, WA. 99009

Stephens, Helen P.
5295 Greencastle Way
St. Mountain, Ga. 30087

Randolph Moore
P. O. Box 383
Snellville, Ga. 30278

Mrs. Malcolm F. Turner
1734 Tecumseh Tr.
Pelham, AL. 35124

W. Ben Sorrell
P.O. Box 2053
New Port Beach, CA.



GIRL SCOUT LEADER FERN COUTANT (L), NIKI CAHN (R) INTRODUCE JUNIOR SCOUTS TO HISTORICAL SOCIETY
Debbie Christenson, Nicki Coutant, Stacey Cahn, Shawn Cameron, Stephanie Merget Join
(Credit Pat Johnson for picture and info)

FUTURE HISTORIANS

The Gwinnett Historical Society has 18 future historians.

They are members of Girl Scout Troop 734 of the Lilburn area. They signed up with the Society at the January meeting under the student annual membership rate of one dollar.

Five of the Girl Scouts were accompanied to the meeting by Leaders Fern Coutant and Niki Cahn, where the group was recognized.

The Scouts have been active in clean-up work at the Russell-Wynne house near Lilburn, now being restored under the leadership of Mrs. Janis Sawyer.

Shannon Leigh McCown 4708 Emily Dr. Lilburn, Georgia 30247	Angie Gayle Burdett 4655 Lincoln Way Lilburn, Ga. 30247	Julie Kathrine Thompson 1573 Bent River Drive Lilburn Ga. 30247	Nicole Eliz. Coutant 168 Stone View Dr. Lilburn, Ga.
Terri Kimberly Morgan 553 Emily Dr. Lilburn, Ga. 30247	Karen Marie Smith 4733 Tisha Court Lilburn, Ga. 30247	Viki Lynn Robins 5561 Four Winds Dr. Lilburn Ga. 30247	Natalie Jean Sewell 167 Kettlewood Dr. Lilburn, Ga. 30247
Tracy Lynn Chesney 5473 Wydella Rd Lilburn, Ga. 30247	Megan Bracken 4704 Marc Ct. Lilburn, Ga. 30247	Catherine Anne Townley 347 West Wind Dr. Lilburn, Ga. 30247	Sherri Lynn Pitchford 5446 Wydella Rd. Lilburn, Ga. 30247
Debbie Jean Christenson 5483 Wydella Rd. Lilburn, Ga. 30247	Amy Suzzane Richardson 366 Angie Ct. Lilburn, Ga. 30247	Andreau Lea Mitchell 4682 Kenneth Dr. Lilburn, Ga. 30247	
Regina Gail Barrett 3999 Valley Rark Dr. Lilburn, Ga. 30247	Stacy Lynn Cahn 4646 Lincoln Way Lilburn, Ga. 30247	Audreau Kellea Mitchell 4682 Kenneth Dr. Lilburn, Ga. 30247	

GENEALOGICAL QUERIES

1. LAURA ROCHELEAU (WINN) Rt. 1, Box 139- B2. ELK, WA, 99009

Seek info on my gggF, JOHN WINN (B.1816 S.C.) and wife, MAHALA MOORE (B. 1818 S.C.). 1850 census they are in Gwinnett County with children: Nancy A. 8; John V. 6; Eliza J. 4; Zachariah Taylor 2; Joseph, 3 mths. Zack's parents born South Carolina. John b. (ca) 1816 and Mahala Moore b. (ca) 1818.

2. Delaney (DEE) WILLETT, 1930 Lucky St. Bakersfield, CA, (805) 327-8275.

Will exchange info RE: Drummonds and Oliver families of Gwinnett Co. GA., (ca) 1800-1830). David Drummond from S.C. (ca) 1799, had son, John b. 1804(Gwinnett Co. GA.), moved to St. Clair Co. Ala. (ca) 1822. John m. Nancy Oliver, 8 Jan. 1829 St. Clair Co. Ala. Nancy was daughter of William Oliver and wife, Betsy. William b. 20 Dec. 1781, S. C. had daughter, Nancy, b. 4 July, 1809. William's father was probably James, b. (ca) 1760 and died 1803, Abbeyville Dist. S. C.

Mrs. Willett's parents were Benjamin Garland Winfred Willett and Lena Cherry Pendergrass.

3. LORA CRUSE, 208 W. Kiowa, Lindsay, OK. 73052

Looking for info. on William Cruse, b. (ca) 1790 South Carolina ? Died in Lawrenceville in 1856. Tried several sources, nothing found.

4. THELMA FAYE CAIN PRINCE, 44 Clemson Rd. Parlin, N. J. 08859

Interested in corresponding with descendants of Cains of Gwinnett, g. grandfather, John F. M. Cain, b. 1839, GA., son of James and Easter Cain, b. S. C. Asks address: MRS. LAUREN V. (CAROLYN) FOREMAN, 10 Hill St., Buford, GA. 30518.

5. MRS. ERNEST PACE WHITEHEAD, 535 S. Church St. Blakely, GA. 31723

Appreciate death date and place of burial for John Dunbar and wife, Margret, who moved to Gwinnett County in 1824, settling on Pugh's Creek. John Dunbar died after 1830 census, wife died between years 1824-1830.

6. MRS. ANNE BOWDEN, 4736 S. 4420 W., Kearns, UT, 84118.

Be glad to help your members in genealogical research here and in genealogical library at Salt Lake City, Utah. Have been doing research over 10 years.

7. VIOLET SIMS HENRY, 5334 Scofield Rd., College Park, GA. 30349.

Does anyone know the surname of the wife of William Edward Bobo (Mary??) Also surname of wife of John S. Bobo (Elizabeth M. ??)

3. LOUISE PULLEN NIEDERMAIER, 3922 S. Buckner Blvd., Dallas, Texas 75227.

Gladly pay for xerox copies of any information found on my early ancestors who lived in Gwinnett as follows:

William Coatsworth Pinckney Liddell b. July 7, 1822, Gwinnett County, GA. m. Evalina Benson Wynne in Gwinnett Co. GA. Migrated to Alabama in 1856. These are my g grandparents.

W. C. P. Liddell, son of Daniel Wilson Liddell, b. Feb. 17, 1786, d. Nov. 8, 1846 in Gwinnett Co. m. Isabella Liddell (second cousin) d. August 11, 1875 in Gwinnett Co.

Evalina Benson Wynne, wife of W.C.P. Liddell who was daughter of Thomas Wynne, d. August 20, 1839, Gwinnett Co., wife Mary Prince Benson, d. October 18, 1866, Gwinnett Co.

Daniel Wilson Liddell, son of William Liddell, who d. August 23, 1836 Gwinnett Co. his wife Ruth Keith (cousin) who d. April 22, 1845 Gwinnett Co.

Isabella Liddell, daughter of Moses Liddell Sr., d. Aug. 3, 1802 Anderson Co. S. C. His wife Elizabeth Johnson d. 1853 Gwinnett Co.

9. SHIRLEY DAVIS, 5233 Collingwood Terr. College Park, GA, 30349

My great grandfather, John H. Kennedy and his brother, Melvin, believed to be buried at the Midway Methodist Church Cemetery near Auburn, GA. Unfound Kennedy graves. Do any members of the Gwinnett Historical Society know if there is a second part to the cemetery?

10. MRS. GORDON LONDON, 1408 Stephens Ave., Baton Rouge, LA. 70808

Need parents, dates of birth, marriage and death, and county or counties in South Carolina for John Barnett (t) b. (ca) 1806 S. C., and his wife, Sarah Wood, b. (ca) 1803 S. C. Shown on p. 184, #788, in Berkshire district of Gwinnett Co. 1850 census. Would like to correspond with other researchers on Barnett(t) Wood(s) or Hammon(d)'s families and share information.

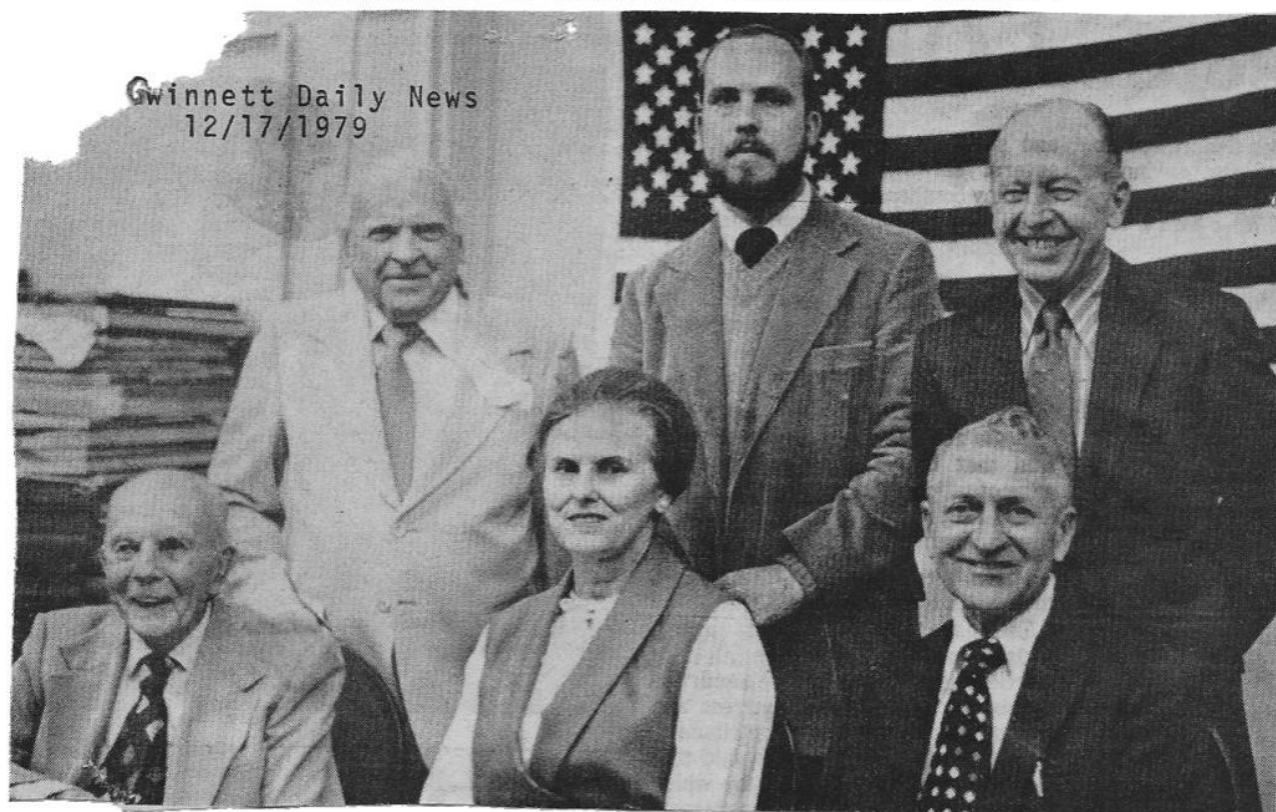
11. JACK S. HOPKINS, 3701 Eureka St. #36c. Anchorage, AK. 99503

Need information on Daniel D. Hopkins (1840-1909) m. Susan Ann Owens (1848-1928). He fought in Civil War (Co. H, 7th Regt., GA VOLUNTEERS INFANTRY C.S.A. Army, northern Virginia). Had 8 sons: George, Robert, Charles, Daniel, James, Henry, Barton, and Eddie.

12. MRS. LADSON F. HOWELL, 15 Royal Pines Blvd. Lady's Island, Beaufort, S. C. 29902.

Frederick Williams (b. 1751, Duplin Co., N.C.) m. Arrabecca Goff (daughter of John Goff, Sr.) in N. C. They, along with Fredrick's brother David (m. Mary James, 1786) and their children moved to Georgia about 1795. I am interested in exchanging information with the descendants of their children: John, David (m. Sabra Lanier), James Monroe (m. Annie Elkins), Owen (m. 1st Mary Donaldson, 2nd. Avie ?), Frederick William, Stephen, George (?), et al.

PRESIDENTS OF GWINNETT HISTORICAL SOCIETY



Front row (1 to r)-Roy E. Hutchens (1975-76), Annette Williams Tucker (1969),
Hiram Plunkett (1972)
Back row (1 to r)-John J. Hood (1970-71), John Chatham (1978-80), Charles Pentecost
(1977).

The Society's first president, Marvin N. Worthy (1966-67-68) and Dr. James M. Edwards
(1973-74) were unable to be present for this picture.

TREASURER'S REPORT

Jan. 21, 1980

Charles L. Pentecost, Treasurer

Balance, Ckg. A/C, First National Bank, 12-21-79	\$407.43
Deposits to date	292.27
	<hr/> 699.70
Disbursements to date	37.00
	<hr/> \$ 662.70
 Regular Savings: First National Bank	 \$1,184.46
Atlanta Federal	105.00
	<hr/> \$1,289.46
 7½ % CD Atlanta Federal Savings	 \$1,572.85

MARCH MEETING TO FEATURE FILM OF GWINNETT

A 21-minute film, featuring historical and industrial sites of Gwinnett County, will be shown at the March 17 meeting of the Gwinnett Historical Society, Program Chairman Dorsey Stancil announces.

The film was produced by Channel 8 of Athens, GA., about two years ago in cooperation with the Historical Society and the Gwinnett County Chamber of Commerce.

Stancil hopes to have Tracy Power as a Confederate Memorial Day speaker at the April meeting.

(See page 6 on Tracy Power)

NORCROSS COMMUNITY ASSN.

Fraser Duke has been elected President of the Norcross Community Association, formed to promote community spirit and revitalize the city's residential areas. John Chatham, President of the Gwinnett Historical Society, was elected Secretary-Treasurer.

JACKSON COUNTY RECORDING BURIALS

James A. Mathis of Rt. 2, Box 309, Commerce, GA., 30529, will publish a book in 1980 of burials in Jackson County. In the meantime, Mathis writes, "For \$1.00, we will search for any one name in our 170 family and church cemeteries. If the name is found, the name of the cemetery will be included."

WELCOME LIFE-TIME MEMBERS

Annie Frances Flanigan and Fraser Duke are now LIFE-TIME MEMBERS of the Gwinnett Historical Society.

This brings the total of life-time members to 18, according to Society Treasurer Charles L. Pentecost.

The \$100 life-time membership money goes into a special interest bearing certificate of deposit fund, Mr. Pentecost said.

Interest earned on the certificate is used in the Society's regular operating expenses.

QUOTES FROM "ALLIANCE PLOW BOY" newspaper of 1/4/1899:

Mr. L. T. Sudderth and family attended the funeral of Mrs. Sudderth's father, Mr. R. A. Wood at Flowery Branch. . . . Hamiltons in the Hotel Block has everything from a 3 penny nail to a \$40.00 suit . . . Shave 10¢ and haircut 15¢ at Don D. Owens, barber, next door to Bank . . . Mr. H. J. Grogan, the photographer of Cumming, has moved to Buford." "Mrs.

Bona Allen is quite sick of pneumonia

THESE NAMES RING A BELL

The Ladies Handbell Choir of the United Methodist Church of Lawrenceville entertained members of the Gwinnett Historical Society at its December meeting. The choir was directed by Sandra S. Franklin.

Members of the choir are: Ethel Carpenter, Judy Cox, Annette Chamlee, Melma Henderson, Norma Huff, Gloria James, Molly Kay, Toni Kerns, Vonda Mercora, Belle Northcutt, Nancy Stanley, and Phyllis Stanley.

COMMITTEES ANNOUNCED

President John Chatham announces the committees who will serve with him during his 1980 term.

Cemetery-----Jeanclaire Morris
Library-----Annette Tucker
Membership-----Joyce Pickens - will keep the computer mailing list up-to-date.
Welcome-----Herman Tanner, Evelyn Green, John Hood, George and Evelyn
 Wilkerson
Publication-----Edith Green, Chairman
 Carolyn Robison, Margaret Tanner, Evelyn Green, John Chatham,
 Mildred Martin, Opal Thrasher
Book Steering-----Edith Green, Chairman
 (Family Hist.) Alice McCabe, Editor
 John Hood, Finance
 Joyce Rovetta, John Chatham
Restoration-----John Chatham, Chairman
 (Winn house) Alice Ray, Annie Frances Flanigan, Mildred Martin

THANKS TO OUR VOLUNTEERS

Mrs. Alice McCabe, busy as a bee editing more than 300 manuscripts for the Society's upcoming book "Gwinnett Families, 1818-1968", thanks the following members for helping out at the Society's headquarters office on Clayton Street.

OPAL GUNTER THRASHER for stencil cutting 500 copies of membership forms on paper donated by EVELYN GREEN.

Helpers at the Society's office for typing, filing, answering telephone and mail, taking book orders and signing up new members:

Edith Green	Carole Walker
Mildred Breedlove	Perrin Walker
Paula Bagwell	Crawford Puckett
Joy Wages	Runelle Turner
Loretta Roberts	John Hood (office runner and all-around helper)
Gertrude Buice	
Carolyn Robison	Mary Ellen Williams
Mary Alice Juhan	Margaret Tanner

SYMPATHY EXTENDED

Robert Sanford Kelley, Sr., 56, a native of Lawrenceville, died at his Atlanta home Thursday, January 17, 1980.

He was the son of Mr. and Mrs. Paul V. (Annie Hood) Kelley of Lawrenceville and brother of Mrs. Fred (Anne Kelley) Huppertz of Snellville and Paul Kelley, Jr. of Atlanta.

His mother and sister are members of the Gwinnett Historical Society, whose members extend their deepest sympathy.

Mr. Kelley was a graduate of Lawrenceville High School and Georgia Tech and worked for Lockheed Georgia Co. for 28 years.

CORRECTION ON REID MEMORIAL STORY of 1979-4 GHS NEWSLETTER

An important qualifying phrase was somehow dropped from the sentence "He was the first private operator of a mint." In fact, Reid was the first to mint coins of gold in dollar denominations. There were private mints, even in Colonial days and at least one had minted gold but only in the form of Spanish doubloons.

L. W. RICHARDSON
5443 Dogwood Lane
Gainesville, GA 30501

Min. Inferior Court
Gwinnett County p 82
Dec. 1824

Ordered that Joseph C. Cunningham do receive out of the County funds ten Dollars & fifty Cents for work done on the Jail in the County of Gwinnett

Ordered that James Wardlaw do receive out of the County funds Six Dollars for Cash advanced for
113 record Book Ky. paid

1909 BUICK STILL TOOLS ALONG LAWRENCEVILLE STREETS

The editors of the Eagle took a ride recently in a 70-year-old Buick along the streets of Lawrenceville and marveled at the curiosity and admiration it aroused among the friendly people cruising along in high powered automobiles.

The 1909 Buick, put-putting on two gasoline powered cylinders, was driven by Lige Sims, 23-year-old son of Dr. Fayette A. Sims, Jr., well-known Lawrenceville physician who owns the antique. It is probably one of the oldest operating cars in Gwinnett county.

The ancient Buick originally was owned by the late Jesse Smith of Gwinnett County, according to Dr. Sims. In 1909, the car sold for \$1,095 plus \$100 for a canvas top.

It was acquired by Judge Alverson of Atlanta who sold it to Herb Watts. Dr. Sims bought it from Mr. Watts in 1963, paying \$2,500 for it. The old Buick has an 18 horse-power, 2-cylinder engine, and it is chain driven.

"It was a fair weather car in those early days of dirt roads," said Dr. Sims. "In rainy weather it would mire down in ruts, gumming up the chain in the mud."

The Buick has a wooden body painted a deep wine color and a shining brass water-cooling radiator. It seats five persons, has a cruising speed of about 15 miles an hour and gets 4 to 5 miles on a gallon of gasoline.



EAGLE Editor Emeritus (LEFT), Roy Hutchens, discusses the merits of early automobile travel with Dr. Fayette Sims and his son Lige, before taking to the streets in the doctor's 1909 Buick. The trip was leisurely since the vintage auto averaged only 15-20 mph; slow by today's standards but quite fast in the early 1900's.

It has carbide lamps, pedal and emergency brakes, two forward and one reverse gear changes, and no windshield. The body rests on heavy leaf springs. A side-winder crank is used to start the motor. A 6-volt battery furnishes the starting power and all the tires are 30 by 4 inches.

Dr. Sims, a descendant of a pioneer Gwinnett County family, has practiced medicine in Lawrenceville since 1945. His son, Dr. F.A. Sims, III, is now associated with him. The Sims also have a daughter, Mary Ann Thompson of Lawrenceville.

IRAN VISITED

Joyce Rovetta, who spent two years in Iran with her husband and children, gave an interesting slide-illustrated lecture on Iran at the January meeting.

She told about the Iranian people in happier days, showed pictures of historic sites and the countryside, and reviewed the history of Iran dating back to 4,000 B. C., and days of the Persian Empire.

She told about Daniel of the Old Testament being buried at Susa in Iran, how he is revered by Moslems; about Cyrus the Great, the Persian king who freed the Jews about 500 B. C. as related in the Bible books of Ezra and Nehemiah; the conquering of the Persian Empire by Alexander the Great.

"For 850 years," Rovetta said, "Iran has been ruled by outside forces. Their history has been a bloody one the last 300 years."

Persia was the old name for this southwest Asian country. It has been called Iran since 1935.

The Rovettas moved from Gwinnett County to Tehran, capital of Iran, where Mr. Rovetta was employed by Electronic Data Systems. Their children, Angela, 14, and Brian, 10, attended an American school in Tehran. After two years they returned to the States in 1978.

GWINNETT HISTORICAL SOCIETY, INC.
P.O. Box 261
Lawrenceville, GA 30246

NON PROFIT ORGANIZATION
POSTAGE PAID
Permit #51
Lawrenceville, GA.

(LIBRARY RATE)

Address Correction
Requested